



City of Mineola Broadband Expansion Multi-Gig - Fiber

Jason Slagle
Chief Business Development Officer



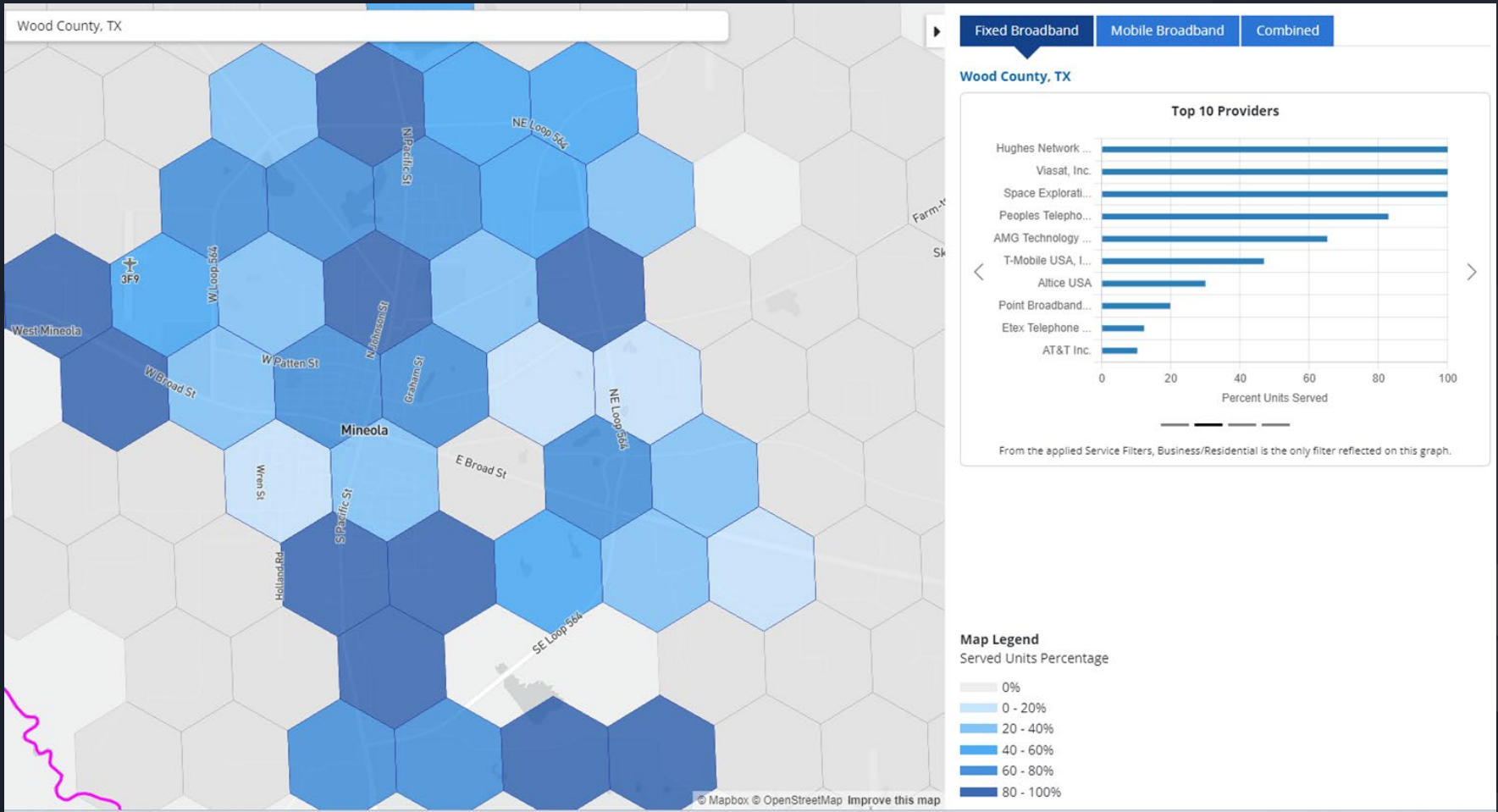
Peoples is seeking an initiative to enhance and extend fiber broadband connectivity throughout the City of Mineola, aiming to achieve impressive target speeds of up to 5 Gigabits per second for residential and up to 100 Gigabit for commercial customers.

The deployment of this advanced infrastructure will revolutionize internet accessibility and reliability for both residential and commercial entities, presenting an innovative and competitive opportunity for the community.

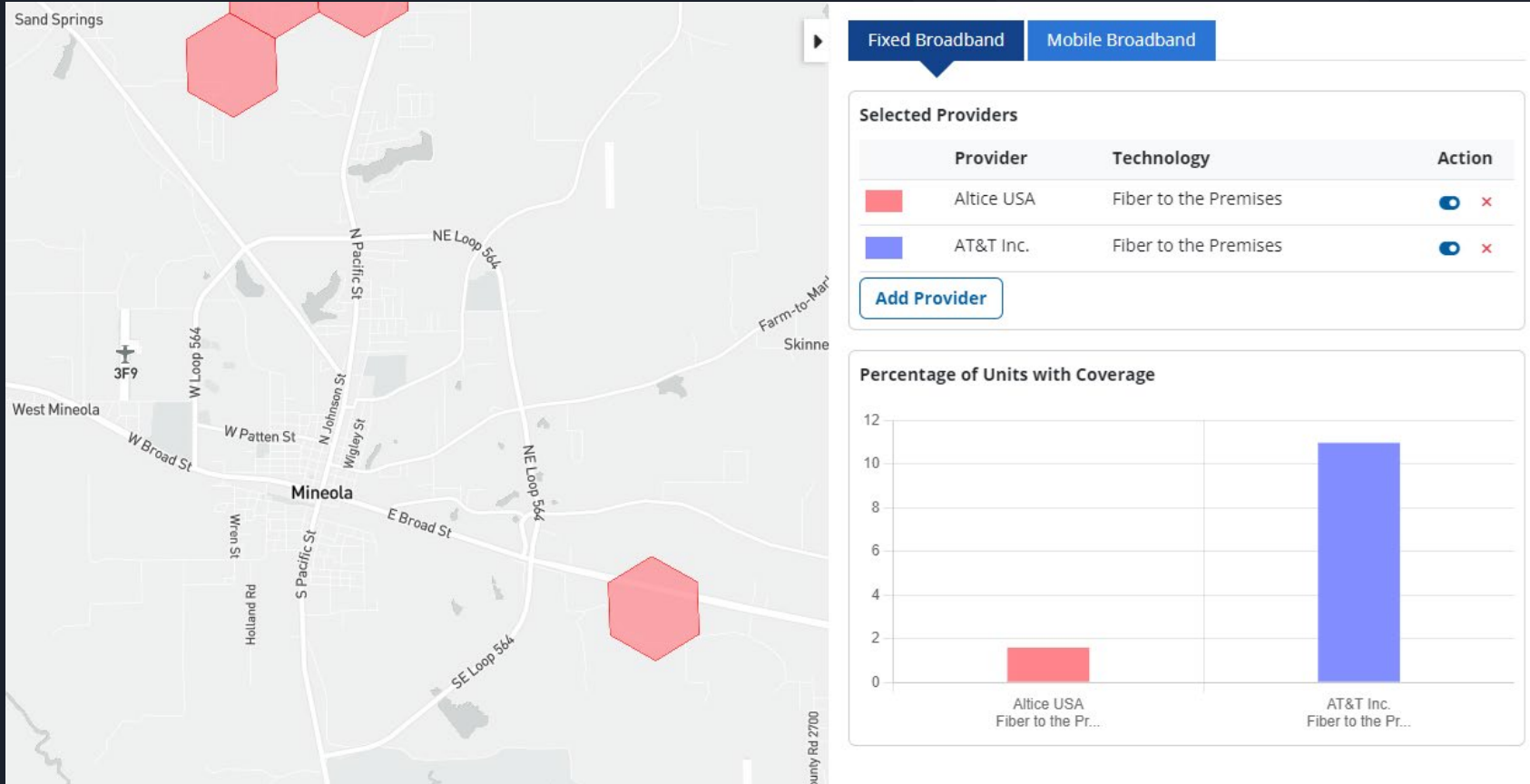
This initiative would serve as an additional catalyst for economic growth, empowering local businesses to thrive in a digitally interconnected world. Residents, too, will benefit from a seamless online experience, enabling them to engage in remote work, online education, and various entertainment options without any compromise in speed or reliability.

Fiber optics is a state-of-the-art technology that can serve the city with reliable, high-speed internet access for decades to come.

FCC Broadband Data

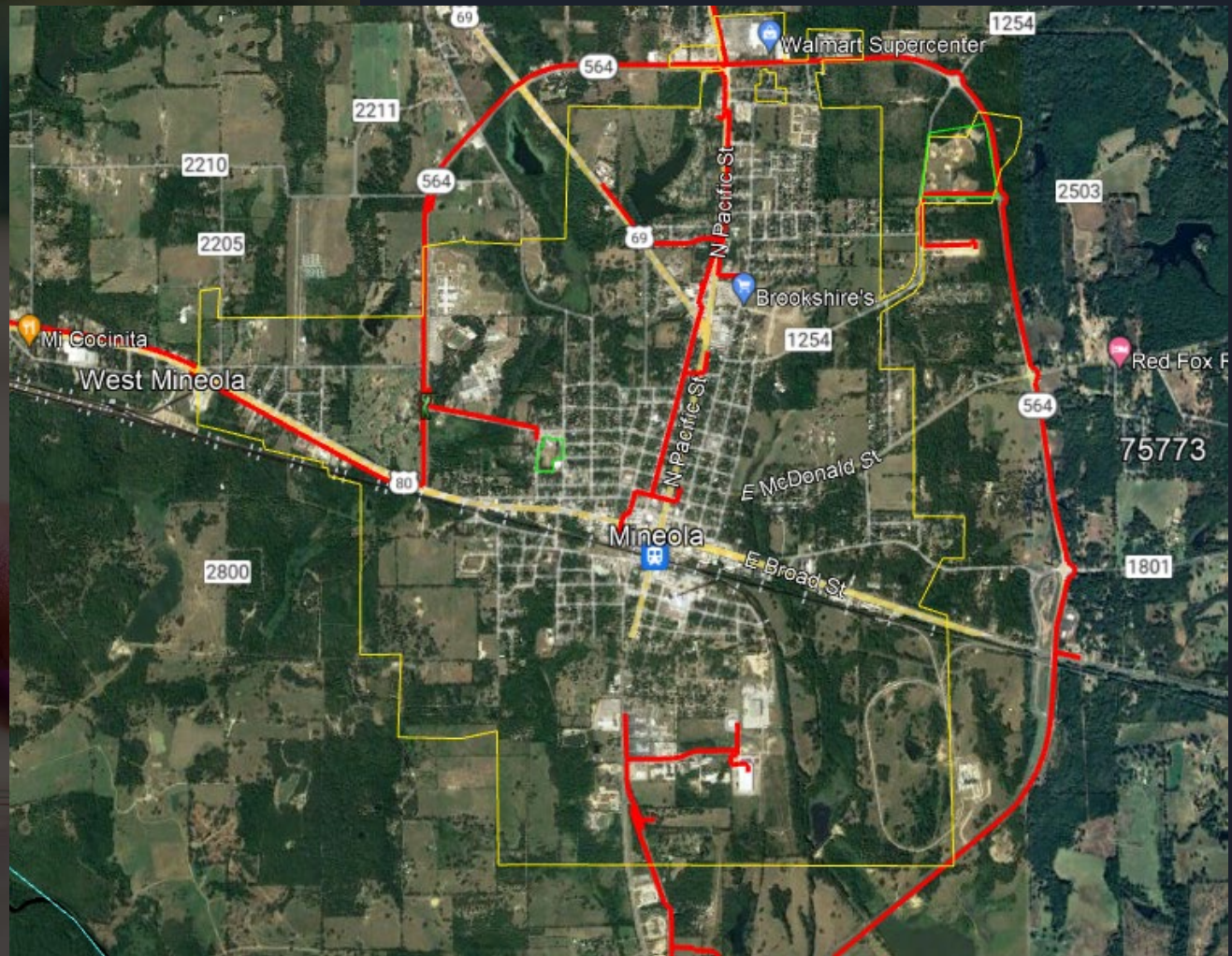


Current Fiber Providers in Mineola

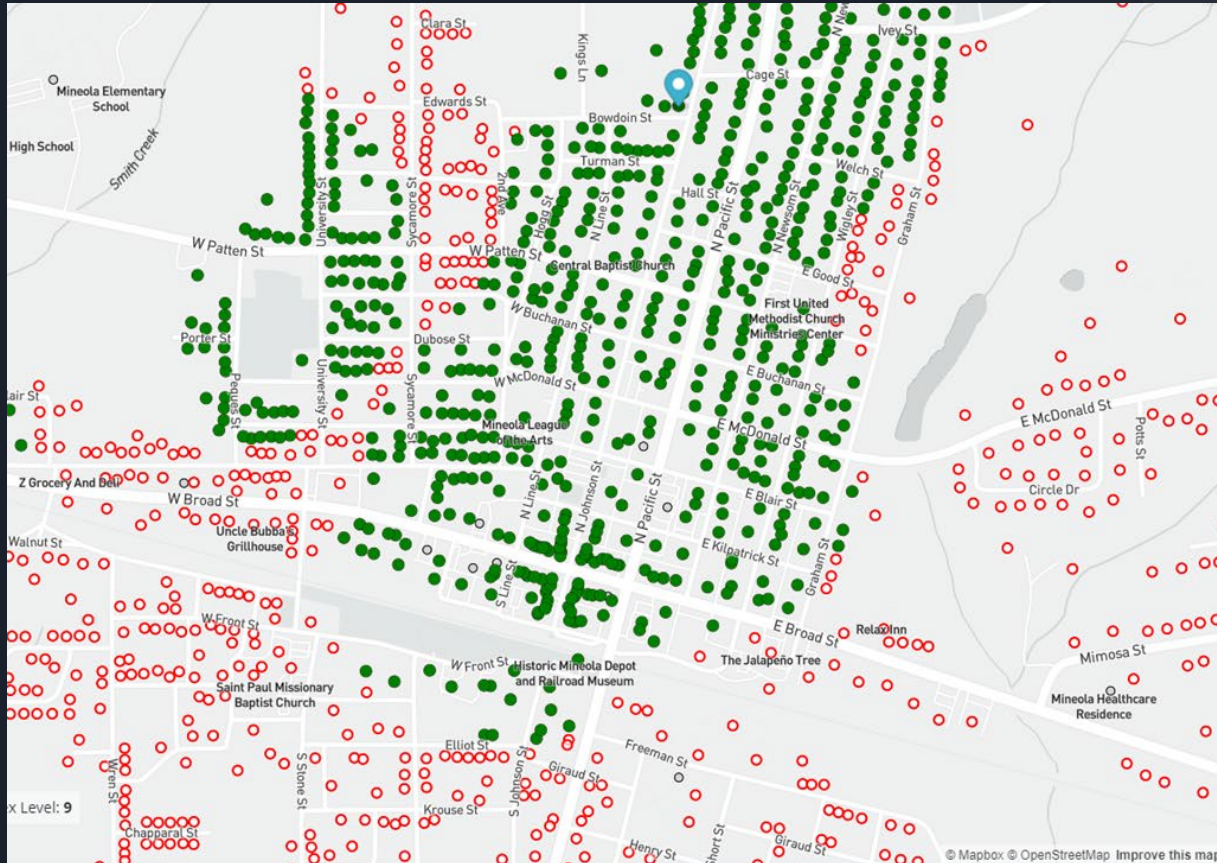




Peoples Fiber (Current)



Provider Data



Selected Location

901 N JOHNSON ST
MINEOLA, TX 75773

Status: Served | Residential | Unit Count: 1

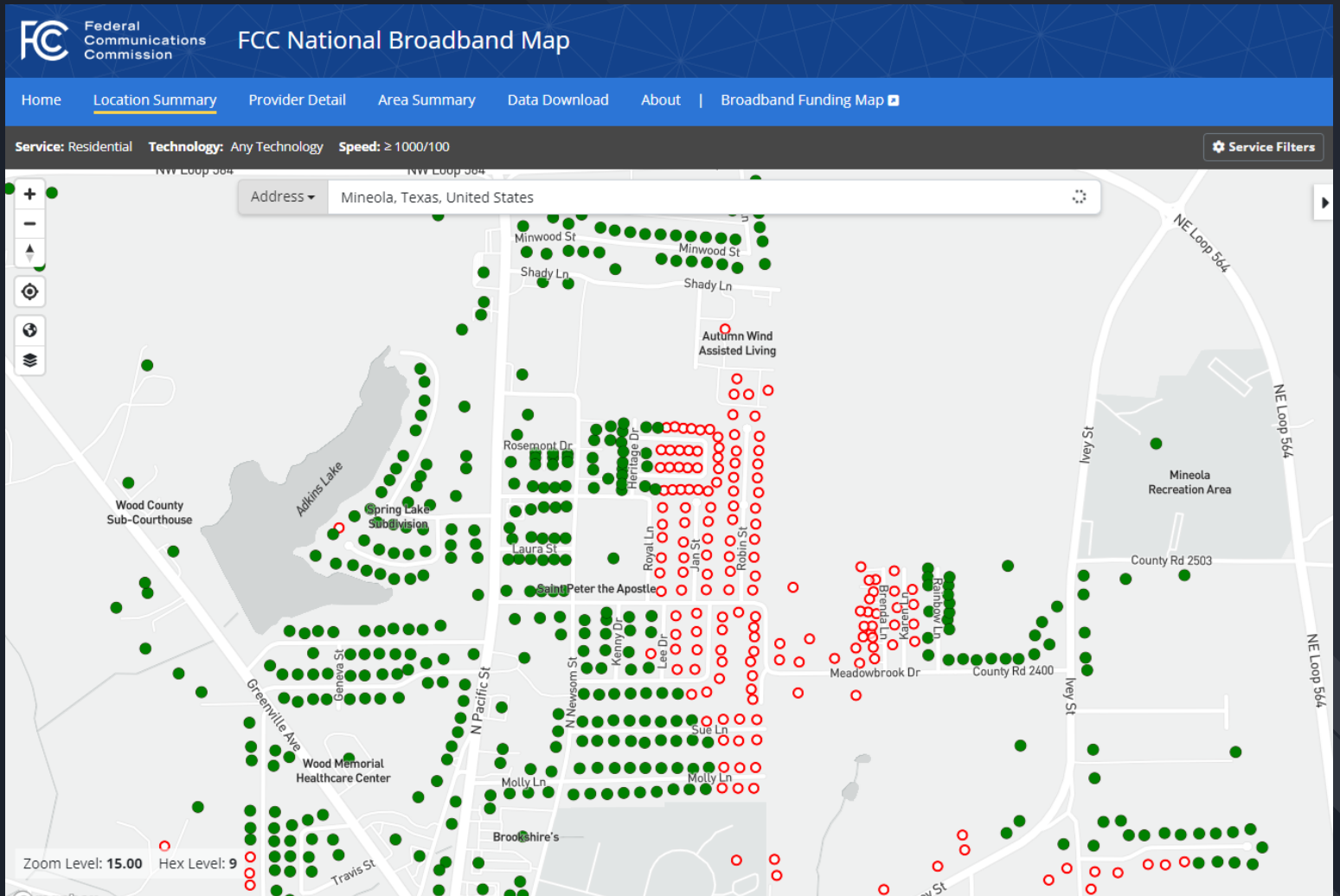
Broadband Availability

Provider	Technology	Down (Mbps)	Up (Mbps)
Altice USA	Cable	940	35
AT&T Inc.	Copper	10	1
Hughes Network Systems, LLC	GSO Satellite	25	3
Peoples Telephone Cooperative	Fiber to the Premises	1000	1000
Space Exploration Technologies Corp.	NGSO Satellite	50	10
T-Mobile USA, Inc.	Licensed Fixed Wireless	0.2	0.2
Viasat, Inc.	GSO Satellite	30	3
Business-only Service			
Viasat, Inc.	GSO Satellite	35	4

Map Legend

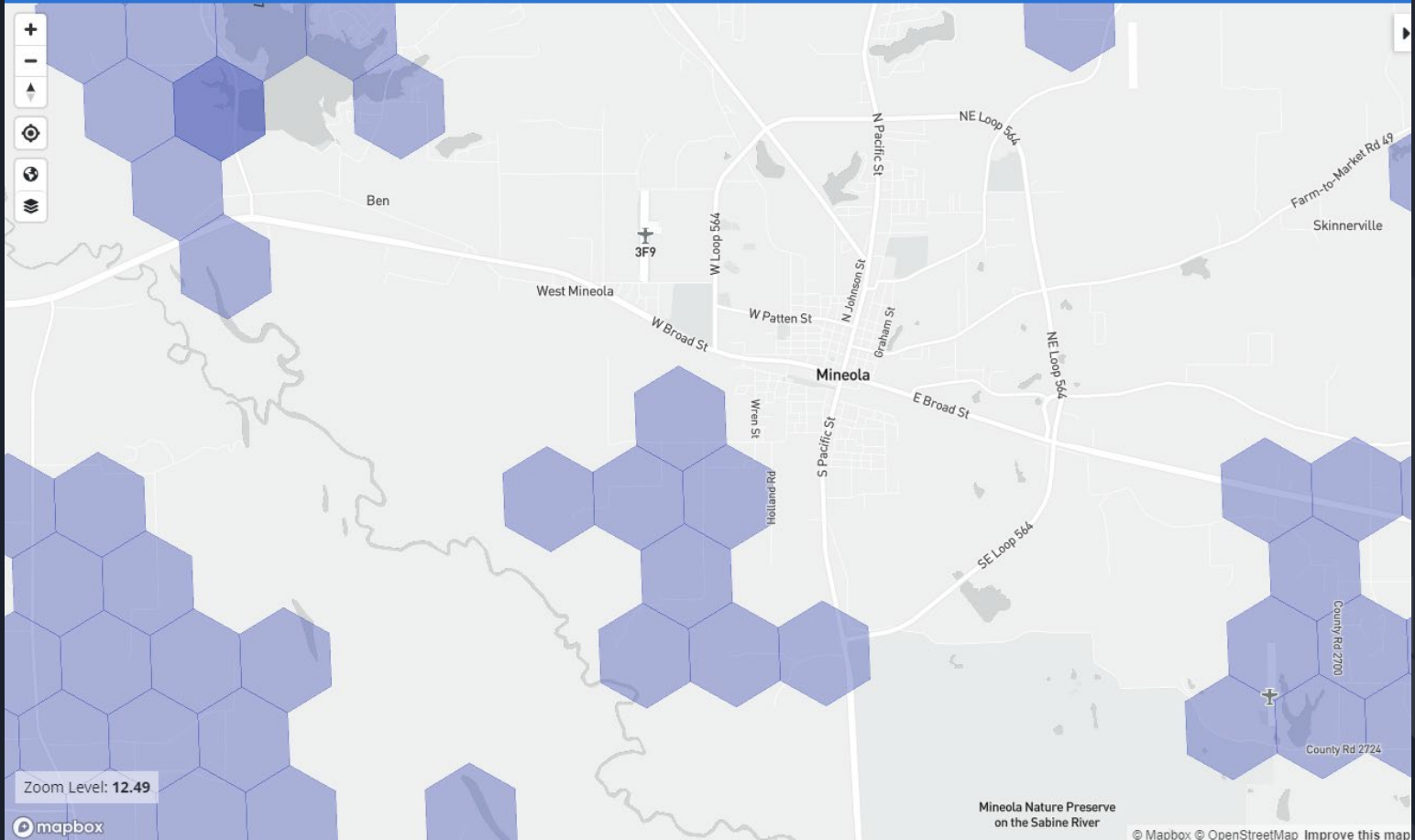
- Coverage available
- Coverage not available
- Not a mass market location

Provider Data





Funded Areas

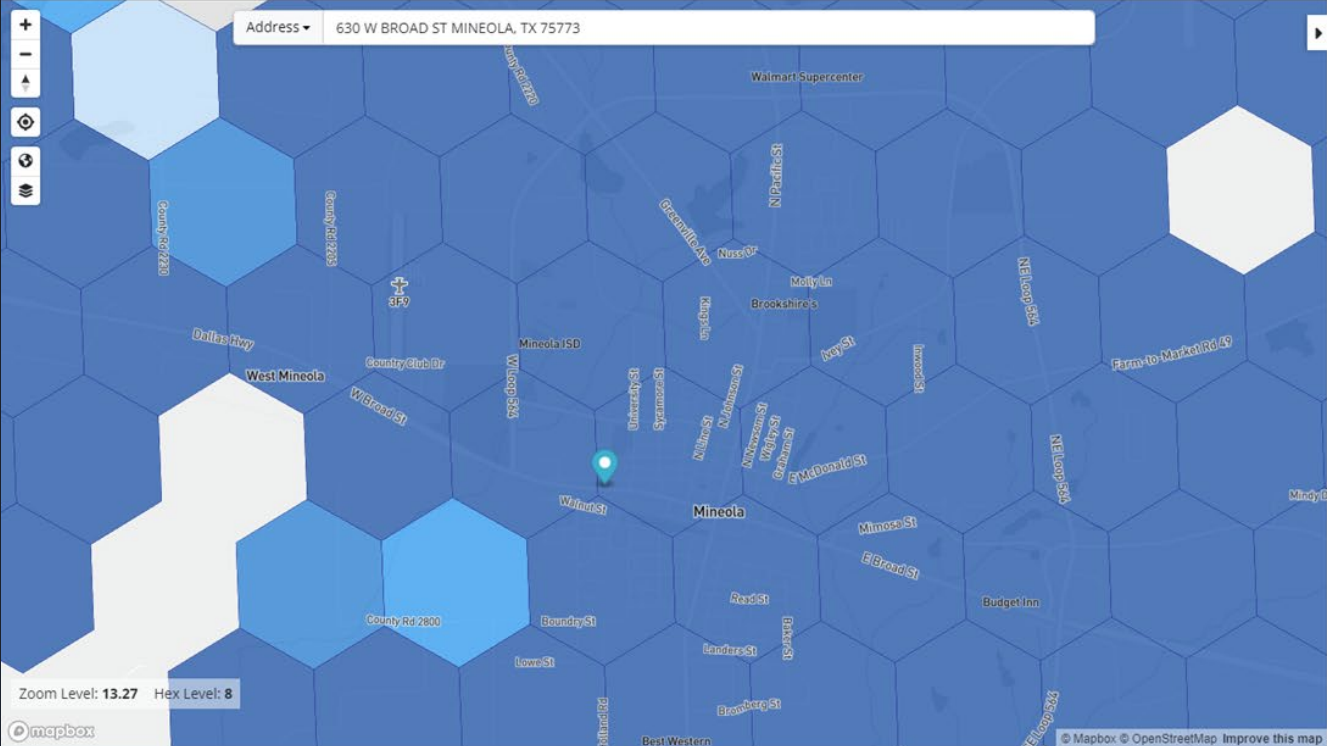


Available Areas for Funding

Service: Residential Technology: All Wired & Lic. Fixed Wireless Speed: ≥ 100/20

Service Filters

Address 630 W BROAD ST MINEOLA, TX 75773



Group/LLC	Technology	Units	Count
▶ AT&T Inc.	Copper	10	1
▶ Hughes Network Systems, LLC	GSO Satellite	25	3
▶ Peoples Telephone Cooperative	Licensed Fixed Wireless	200	40
▶ Point Broadband Fiber Holding, LLC	Unlicensed Fixed Wireless	30	30
▶ Space Exploration Technologies Corp.	NGSO Satellite	220	25
▶ Viasat, Inc.	GSO Satellite	30	3
Business-only Service			
▶ T-Mobile USA, Inc.	Licensed Fixed Wireless	100	20
▶ Verizon Communications Inc.	Licensed Fixed Wireless	10	1
▶ Viasat, Inc.	GSO Satellite	35	4

Map Legend
Served Units Percentage

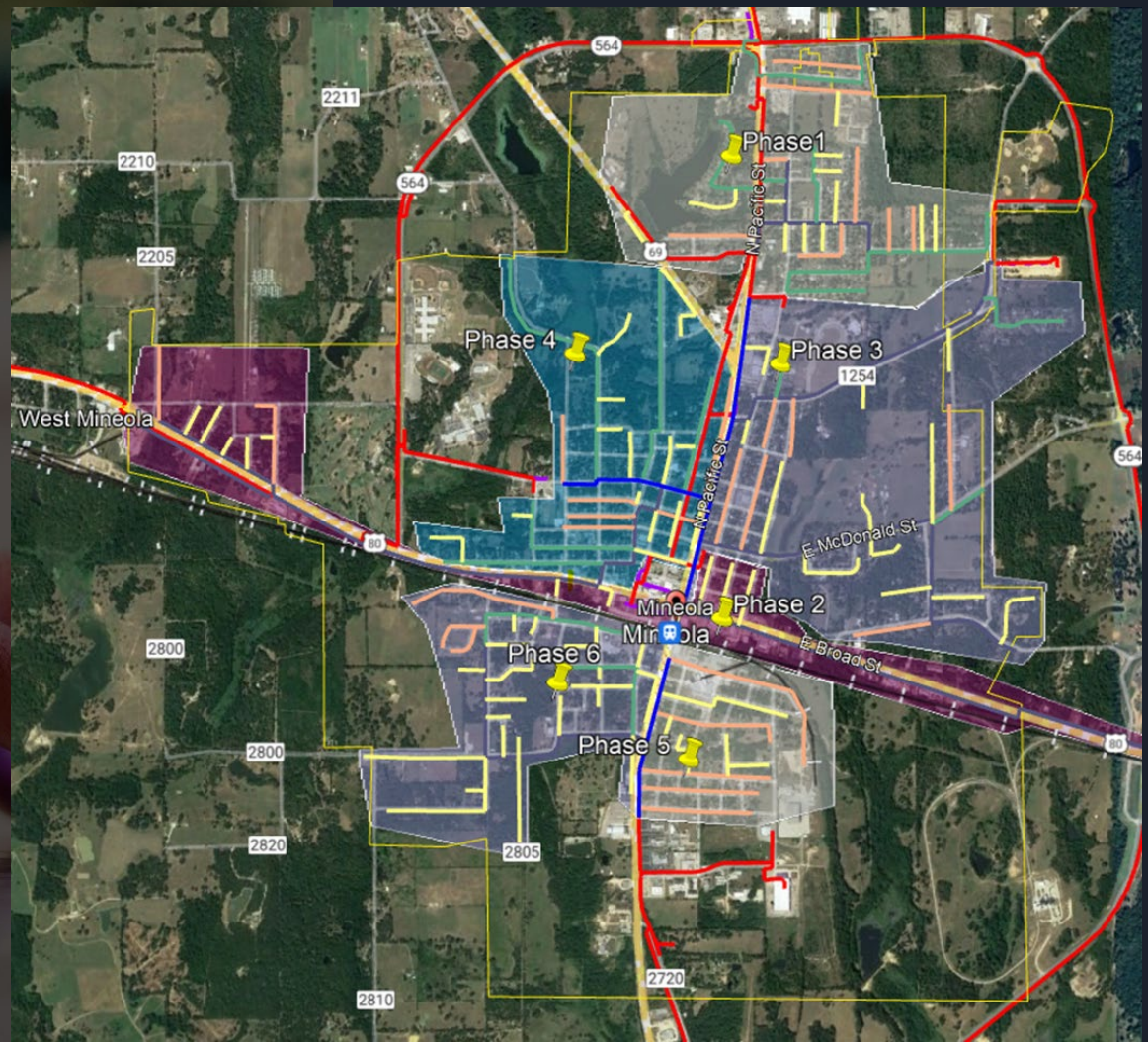
- 0%
- 0 - 20%
- 20 - 40%
- 40 - 60%
- 60 - 80%
- 80 - 100%

Zoom Level: 13.27 Hex Level: 8



Peoples and Mineola - Self Funded Approach

6 Phase Fiber to the Premise Initiative





Financials

City of Mineola FTTH Project 1-2024			
Area	Fiber Main Line Footage	Cost	Passings
Phase 1	32,521	\$552,857.00	411
Phase 2	26,948	\$458,116.00	227
Phase 3	40,467	\$687,939.00	436
Phase 4	36,739	\$624,563.00	498
Phase 5	18,792	\$319,464.00	161
Phase 6	30,277	\$514,709.00	192
Total	185,744	\$3,157,648.00	1925
Main Line Construction Cost Estimate		\$3,157,648.00	
Drop Cost Estimate @ 30% take rate		\$ 693,000.00	
Total Cost Estimate @ 30% take rate		\$3,850,648.00	
External Funding Target		\$ 920,000.00	
City and EDC Funding Years		4 years	

FIBER CONSTRUCTION PROCESS

1

Design/ Staking

Design/Staking is preparing construction drawings for the network build.

2

Permits

Applications must be submitted for approval to construct within public right-of-way.

3

Locates

Other utilities (water, electric, gas, etc.) must be located prior to construction to prevent damage and outages.

4

Cable Construction

Mainline fiber placing begins. Orange conduit is placed by boring, plowing or trenching and fiber cable is pulled into the conduit.

5

Drop Construction

Contractors will work with homeowners to identify utilities in the yard, sprinkler systems, etc. to prevent damage while placing cable on their property.

6

Splicing

The mainline fiber cable is joined with the cable to your home to complete the circuit.

7

Premise Installation

This is the installation of fiber service in your home.

